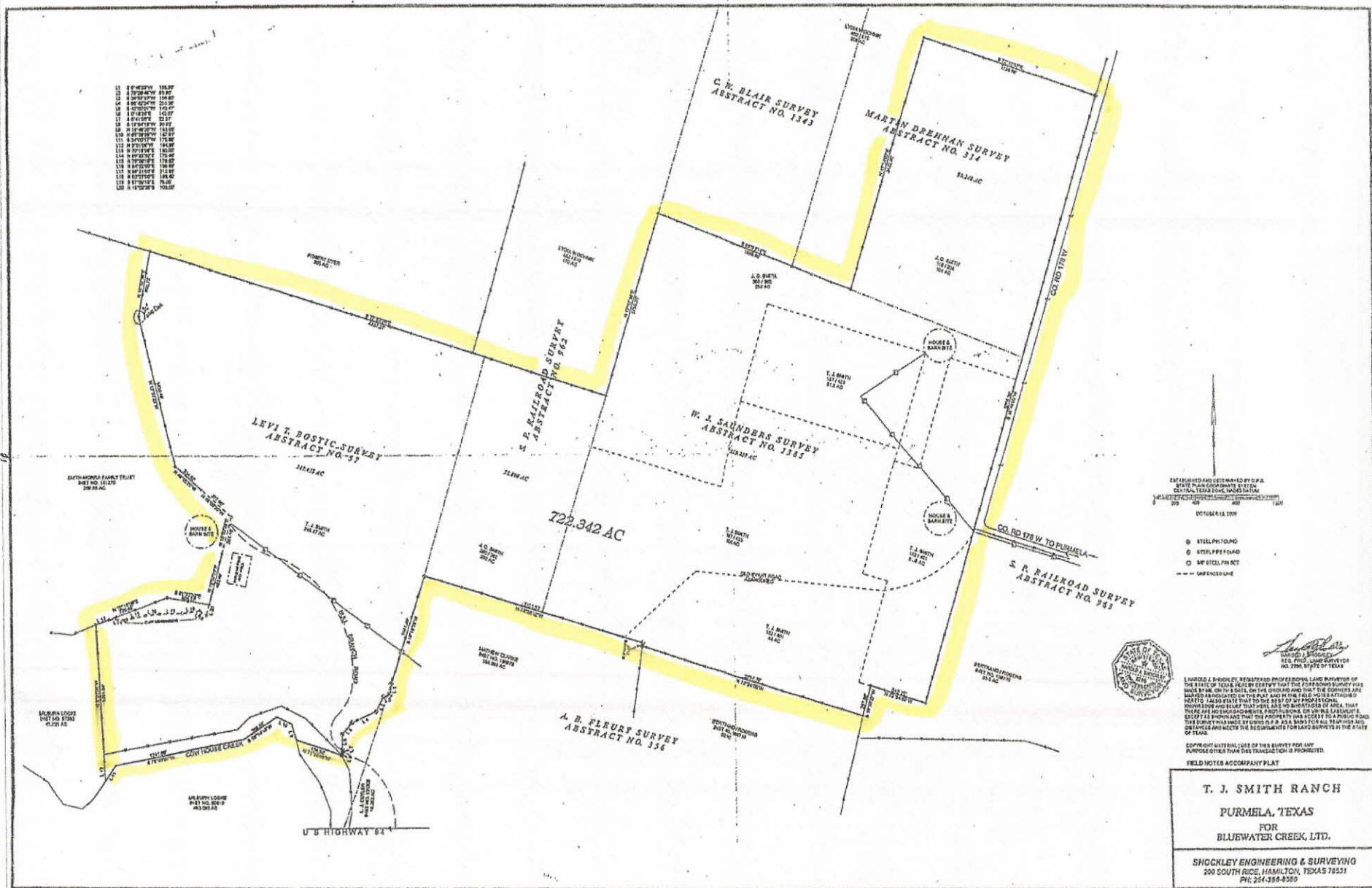


11	N 89°00'00"W	150.00'
12	S 70°00'00"W	85.00'
13	S 89°00'00"W	150.00'
14	N 89°00'00"W	150.00'
15	S 89°00'00"W	150.00'
16	S 89°00'00"W	150.00'
17	S 89°00'00"W	150.00'
18	S 89°00'00"W	150.00'
19	S 89°00'00"W	150.00'
20	S 89°00'00"W	150.00'
21	S 89°00'00"W	150.00'
22	S 89°00'00"W	150.00'
23	S 89°00'00"W	150.00'
24	S 89°00'00"W	150.00'
25	S 89°00'00"W	150.00'
26	S 89°00'00"W	150.00'
27	S 89°00'00"W	150.00'
28	S 89°00'00"W	150.00'
29	S 89°00'00"W	150.00'
30	S 89°00'00"W	150.00'
31	S 89°00'00"W	150.00'
32	S 89°00'00"W	150.00'
33	S 89°00'00"W	150.00'
34	S 89°00'00"W	150.00'
35	S 89°00'00"W	150.00'
36	S 89°00'00"W	150.00'
37	S 89°00'00"W	150.00'
38	S 89°00'00"W	150.00'
39	S 89°00'00"W	150.00'
40	S 89°00'00"W	150.00'
41	S 89°00'00"W	150.00'
42	S 89°00'00"W	150.00'
43	S 89°00'00"W	150.00'
44	S 89°00'00"W	150.00'
45	S 89°00'00"W	150.00'
46	S 89°00'00"W	150.00'
47	S 89°00'00"W	150.00'
48	S 89°00'00"W	150.00'
49	S 89°00'00"W	150.00'
50	S 89°00'00"W	150.00'



ESTABLISHED AND DETERMINED BY O.P.A.  
 STATE PLAT BOOK NO. 15123  
 COUNTY, TEXAS, COOK, HAMILTON  
 DISTRICT OF TEXAS  
 200 000  
 100  
 OCTOBER 15, 2010

○ STEEL PIN FOUND  
 ○ STEEL PIPE FOUND  
 ○ NO STEEL FOUND  
 --- OFFSHORE LINE



I, WARD J. SHOCKLEY, REGISTERED PROFESSIONAL LAND SURVEYOR OF THE STATE OF TEXAS, HEREBY CERTIFY THAT THE FOREGOING SURVEY WAS MADE BY ME, OR IN MY PRESENCE, ON THE GROUNDS AND THAT THE QUANTITIES AND BEARINGS INDICATED ON THE PLAT AND BY THE FIELD NOTES ATTACHED HERETO, AS FAR AS THEY RELATE TO THE BOUNDARIES OF THE PLAT, ARE TRUE AND CORRECT TO THE BEST OF MY PERSONAL KNOWLEDGE AND BELIEF. I HEREBY CERTIFY THAT THERE ARE NO ENCUMBRANCES, ENCROACHMENTS, OR UNLAWFUL CLAIMS OF ANY KIND ON THE PROPERTY SURVEYED, AND THAT THE SURVEY WAS MADE BY ME OR BY A BOUNDARY SURVEYOR AS A PUBLIC ACT, OR UNDER AND IN ACCORDANCE WITH THE REQUIREMENTS FOR LAND SURVEYS BY THE STATE OF TEXAS.

COPYRIGHT MATERIAL: USE OF THIS SURVEY FOR ANY PURPOSE OTHER THAN THE TRANSACTION IS PROHIBITED.  
 FIELD NOTES ACCOMPANY PLAT

**T. J. SMITH RANCH**  
 PURMELA, TEXAS  
 FOR  
 BLUEWATER CREEK, LTD.

**SHOCKLEY ENGINEERING & SURVEYING**  
 200 SOUTH RICE, HAMILTON, TEXAS 76531  
 PH: 254-358-8255